

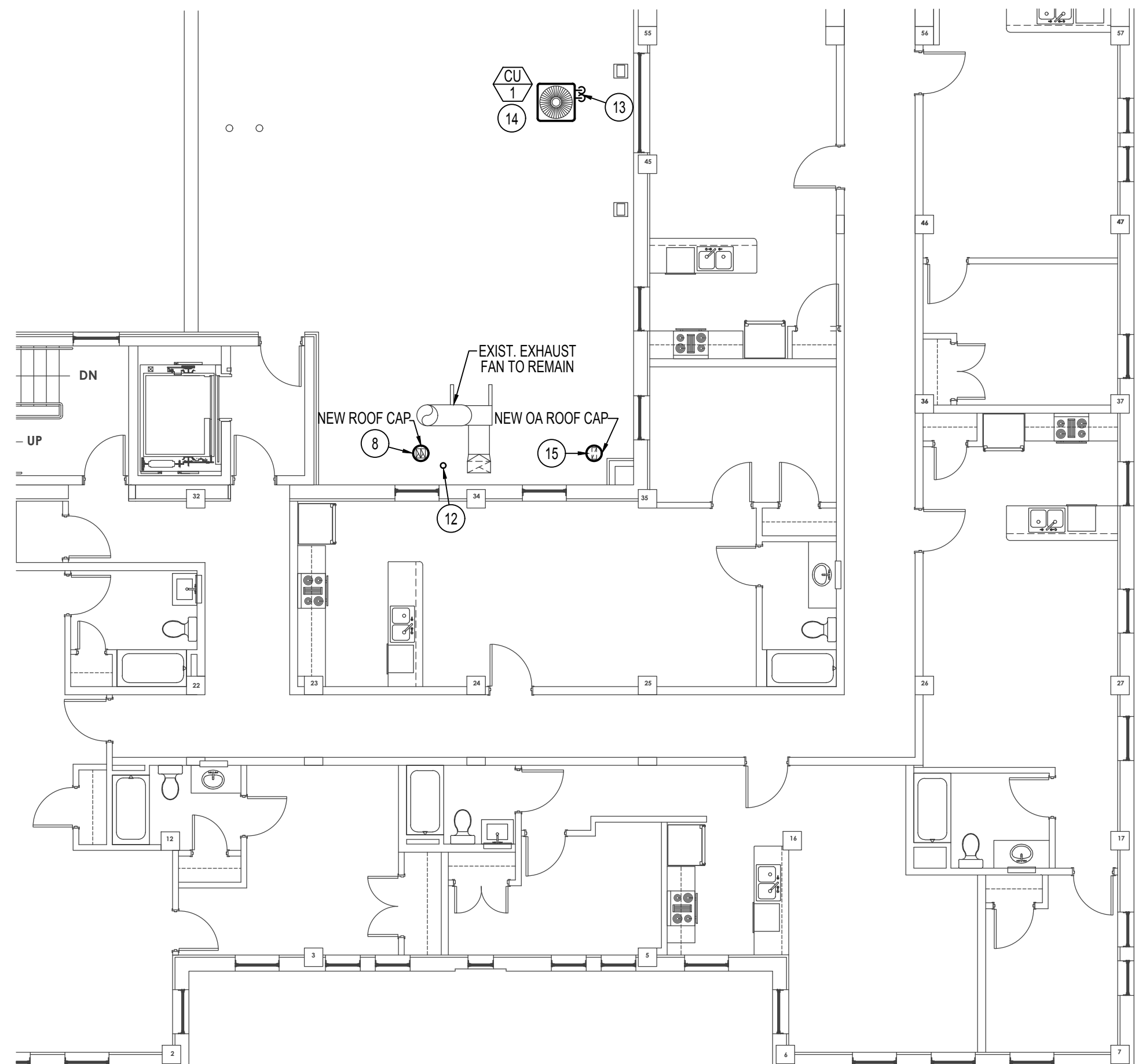
FURNACE AND DX COOLING COIL SCHEDULE																							
SYM.	TYPE	C.F.M.	SP _E	SPEED	H.P.	CHAR.	A.G.A.			E.A.T.	L.A.T.	GAS TYPE	DX COOLING COIL				REMARKS						
							INPUT	OUTPUT	@ ELEV.				B.T.U.	E.A.T.	L.A.T.	MAX. P.D.		LIQUID	SUCTION	PIPING SIZES	INTAKE	EXHAUST	
F-1 EXIST.	UPFLOW	1600	60"	M-HIGH	1	120/60/1	120,000	117,000	95,940	65°F	105°F	NAT	48,000	75°F	55°F	25"	5/8"	7/8"	3/4"	3/4"	2" PVC	2" PVC	EXISTING CARRIER MODEL 59SPA120E24-22 WITH CNPVP-48-24ALA R-410A DX COIL
F-2	UPFLOW	1200	60"	M-HIGH	1	120/60/1	80,000	78,000	65,550	65°F	105°F	NAT	36,000	75°F	55°F	25"	FUTURE	FUTURE	3/4"	3/4"	2" PVC	2" PVC	CARRIER MODEL 59SPA080E21-16 WITH FULLY CASED R-410A DX COIL TO MATCH FURNACE AND VERTICAL VENT TERMINAL ASSEMBLY.

CONDENSING UNIT SCHEDULE										
SYM.	BTU	EAT	CHAR.	MCA	MOCOP	SEER	REFR.	PIPE SIZING		REMARKS
								LIQUID	SUCTION	
CU-1	48,000	95°F	208/60/3	18.8	30.0	13.0	R-410A	5/8"	7/8"	CARRIER MODEL 24ABB348A005 WITH 0°F LOW AMBIENT HARD START KIT.

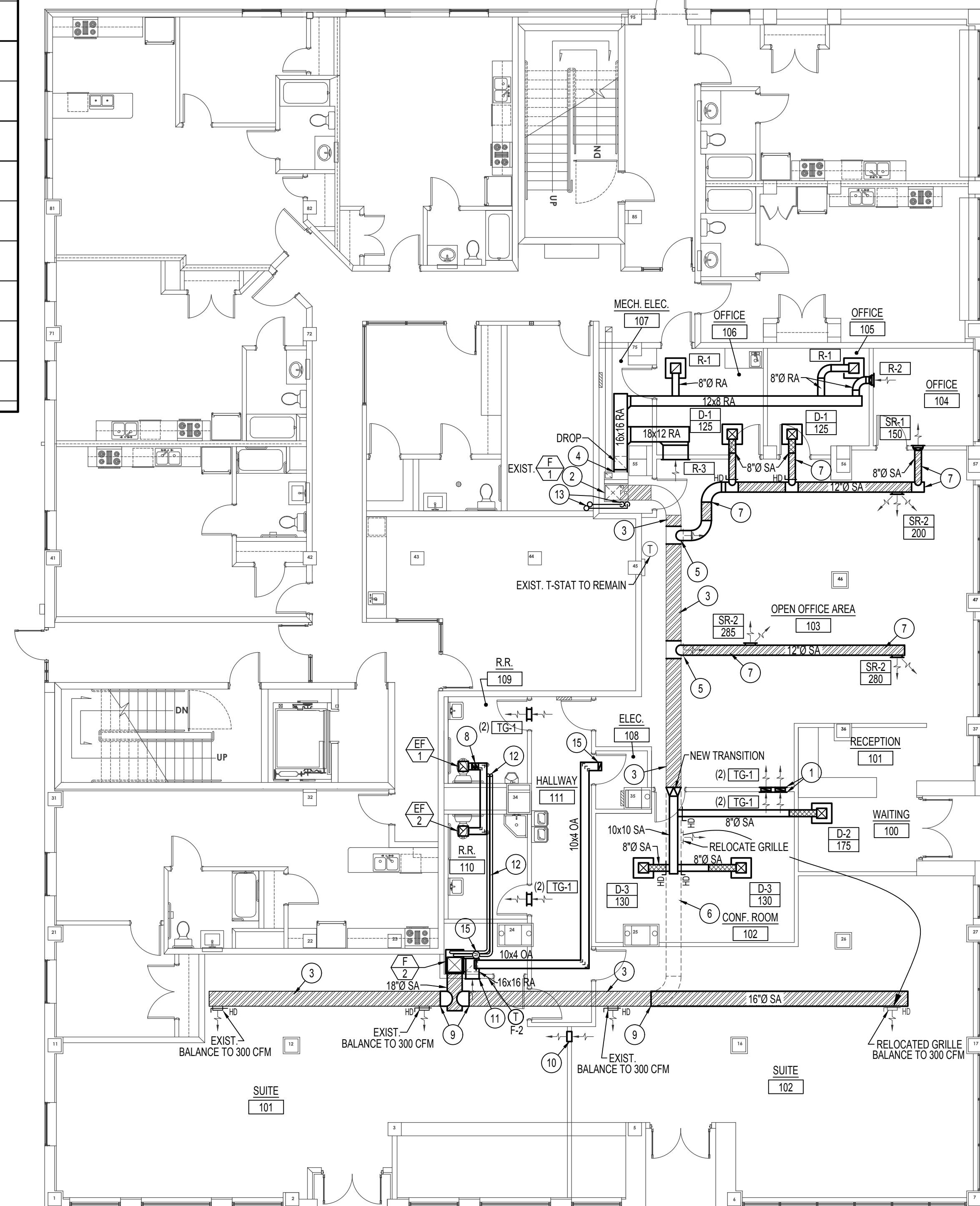
* CONDENSING UNIT SERVES EXISTING FURNACE F-1

EXHAUST FAN SCHEDULE									
SYM.	TYPE	C.F.M.	S.P.E.	WATTS	CHAR.	R.P.M.	CONTROL	REMARKS	
EF-1	CEILING MOUNTED	100	.40	100	120/60/1	750	OCC. SENSOR	BROAN LOSONE SELECT MODEL L100 WITH BACKDRAFT DAMPER. 10x3 EXHAUST DUCT TO ROOF CAP.	
EF-2	CEILING MOUNTED	100	.40	100	120/60/1	750	OCC. SENSOR	BROAN LOSONE SELECT MODEL L100 WITH BACKDRAFT DAMPER. 10x3 EXHAUST DUCT TO ROOF CAP.	

GRILLE AND REGISTER SCHEDULE									
SYM.	TYPE	SIZE	CFM RANGE	THROW PATTERN	CONSTR.	FINISH	BALANCING DAMPER	FIRE DAMPER	REMARKS
D-1 CFM	CEILING	9x9	50-280	⬇	STEEL	WHITE	NA	NA	PRICE MODEL SMD IN 24x24 LAY-IN MODULE
D-2 CFM	CEILING	9x9	50-280	⬇	STEEL	WHITE	NA	NA	PRICE MODEL SMD IN 24x24 LAY-IN MODULE
D-3 CFM	CEILING	9x9	50-280	⬇	STEEL	WHITE	NA	NA	PRICE MODEL SMD IN 24x24 LAY-IN MODULE
SR-1 CFM	HIGH SIDEWALL	12x6	150-300	NA	STEEL	WHITE	YES	NA	PRICE MODEL 520D
SR-2 CFM	HIGH SIDEWALL	12x6	150-300	NA	STEEL	WHITE	YES	NA	PRICE MODEL SDGE FOR 12" Ø DUCT
R-1	CEILING	10x10	150-300	NA	STEEL	WHITE	NA	NA	PRICE MODEL 535 IN 24x24 LAY-IN MODULE
R-2	HIGH SIDEWALL	12x6	100-200	NA	STEEL	WHITE	NA	NA	PRICE MODEL 535
R-3	HIGH SIDEWALL	30x12	1000-1200	NA	STEEL	WHITE	NA	NA	PRICE MODEL 535
TG-1	SIDEWALL TRANSFER	12x6	100-200	NA	STEEL	WHITE	NA	NA	PRICE MODEL 535



2nd FLOOR MECH. PLAN
SCALE: 1/8" = 1'-0"
North



1st FLOOR MECH. PLAN
SCALE: 1/8" = 1'-0"
North

- PLAN NOTES:**
- INSTALL NEW TRANSFER AIR GRILLES AT 12" A.F.F. ON CONFERENCE ROOM 102 SIDE OF WALL AND 12" BELOW CEILING ON OPEN OFFICE 103 SIDE OF WALL. PROVIDE AND INSTALL 14x3 DUCT FROM LOW TRANSFER GRILLE TO HIGH TRANSFER GRILLE.
 - EXISTING FURNACE TO REMAIN. PROTECT DURING CONSTRUCTION.
 - EXISTING SUPPLY AIR DUCT TO REMAIN. PROTECT DURING CONSTRUCTION.
 - REMOVE AND RELOCATE EXISTING RETURN AIR GRILLE ON FACE OF RETURN AIR PLENUM. CONNECT NEW 16x16 RA DUCT AS SHOWN. PATCH EXISTING PLENUM AND SEAL AIRTIGHT.
 - REMOVE EXISTING SUPPLY AIR REGISTER AND INSTALL NEW SPIRAL EXPOSED SUPPLY AIR DUCT AS SHOWN. PATCH AND SEAL EXISTING DUCT AIRTIGHT.
 - REMOVE EXISTING PORTION OF SPIRAL EXPOSED SUPPLY AIR DUCT AS SHOWN.
 - ALL NEW EXPOSED DUCTWORK TO BE PAINTLOK AND MOUNTED AS HIGH AS POSSIBLE IN ROOM.
 - RISE (2) 10x3 EA DUCTS UP THRU ROOF TO NEW FLAT ROOF CAP. SEE DETAIL ON SHEET M200. SEAL ROOF PENETRATION WEATHERTIGHT.
 - CONNECT NEW SPIRAL SUPPLY AIR DUCT TO EXISTING DUCT AT THIS LOCATION.
 - PROVIDE AND INSTALL 12x14 SHEET METAL BOOT AT 6" A.F.F. THRU WALL IN BETWEEN STUDS TO PROVIDE TEMPORARY RETURN FROM TENANT SPACE BACK TO NEW FURNACE.
 - CONNECT 16x16 RA DUCT TO SIDE OF FURNACE AND RUN DUCT THRU WALL INTO FUTURE TENANT SPACE. INSTALL RELOCATED RETURN AIR GRILLE FROM EXIST. FURNACE F-1 TO NEW DUCT ON WALL. SEE NOTE 4 ABOVE.
 - RUN (2) NEW 3" Ø FURNACE FLUES FROM NEW FURNACE AS SHOWN TO LOWER ROOF AREA AND RISE UP THRU ROOF TO VERTICAL VENT TERMINATION ASSEMBLY. SEE DETAIL ON SHEET M200.
 - CONNECT NEW REFRIGERANT PIPING TO EXISTING DX COOLING COIL ON EXISTING FURNACE AND RUN PIPING UP THRU ROOF THRU GOOSENECK TO NEW CONDENSING UNIT AS SHOWN. SEAL ROOF PENETRATION WEATHERTIGHT. SEE DETAILS ON SHEET M200.
 - INSTALL NEW CONDENSING UNIT ON ROOF ON REDWOOD RAILS WRAPPED IN ROOFING MATERIAL. SEE DETAIL ON SHEET M200.
 - INSTALL NEW 10x4 OUTSIDE AIR DUCT FROM NEW ROOF CAP AND RUN IN CEILING SPACE TO NEW FURNACE F-2 AND CONNECT TO FURNACE RETURN AIR DUCT AS SHOWN. INSTALL HAND DAMPER, ACCESS PANEL AND MOTORIZED DAMPER IN VERTICAL PORTION OF 10x4 OA DUCT. BALANCE HAND DAMPER TO 120 CFM AND INTERLOCK MOTORIZED DAMPER WITH FURNACE OPERATION.

MECH. LEGEND	
SYMBOL	DESCRIPTION
(T)	ELECTRONIC THERMOSTAT
(FC)	EQUIPMENT SYMBOL
HD	HAND DAMPER
(RBD)	ROUND BRANCH DUCT WITH HAND DAMPER
(RSR)	RECTANGULAR SUPPLY AND RETURN AIR DUCT TAKE-OFF
(TV)	TURNING VANES
(DT)	DUCT TRANSITION
(IFD)	INSULATED FLEXIBLE DUCT
(SD)	SPIRAL DUCTWORK
(RAG)	RETURN AIR OR EXHAUST GRILLE
(CD)	CEILING DIFFUSER
(CMEF)	CEILING MOUNTED EXHAUST FAN

MECHANICAL FLOOR PLAN

CONTRACTOR SHALL VERIFY ALL DIMENSIONS & CONDITIONS SHOWN OR IMPLIED

DRAWING SCALE APPLIES TO 22" X 34" SHEET SIZE

REVISION _____ DATE _____

DRAWN BY: SR
CHECKED BY: DCS

JOB NUMBER: 16421
PROJECT DATE: SEPT. 2021

SEPT. 29, 2021

Professional Engineer Registered State of Idaho
David C. Sudweeks
D. C. SUDWECKS

Engineered Systems Associates
1355 EAST CENTER
POCATELLO, IDAHO 83201
PHONE: (208) 233-0501
FAX: (208) 233-0529
EMAIL: esa@engsystems.com
ESA JOB NUMBER: 21068

Myers Anderson
Architecture
Interior Design
Landscape Architecture

101 North Main Street ■ Pocatello, Idaho 83204 ■ Tel: (208) 232-3741 ■ Fax: (208) 232-3782
849 Front Street, Suite 202 ■ Evanston, Wyoming 82930 ■ Tel: (307) 789-0984

BONNEVILLE HOTEL DEVELOPMENT
IDAHO FALLS, IDAHO

PROJECT: _____
SHEET TITLE: _____

MECHANICAL FLOOR PLAN

CONTRACTOR SHALL VERIFY ALL DIMENSIONS & CONDITIONS SHOWN OR IMPLIED

DRAWING SCALE APPLIES TO 22" X 34" SHEET SIZE

REVISION _____ DATE _____

DRAWN BY: SR
CHECKED BY: DCS

JOB NUMBER: 16421
PROJECT DATE: SEPT. 2021

SEPT. 29, 2021

Professional Engineer Registered State of Idaho
David C. Sudweeks
D. C. SUDWECKS

Engineered Systems Associates
1355 EAST CENTER
POCATELLO, IDAHO 83201
PHONE: (208) 233-0501
FAX: (208) 233-0529
EMAIL: esa@engsystems.com
ESA JOB NUMBER: 21068

M100